

**README file for MachStdMill
Beta Test Release**

Calypso Ventures, Inc.
August 23rd, 2010

Copyright © 2010 Calypso Ventures, Inc.
All Rights Reserved.

Table of Contents

1	Introduction.....	4
2	MachStdMill Licensing.....	5
2.1.1	License terms	5
3	MachStdMill Beta Reporting and Feedback	6
4	MachStdMill Resource Usage Information	7
5	Installing MachStdMill	8
5.1	Update to Mach3 3.43.19 or newer.....	8
5.2	Installing MachStdMill	8
5.2.1	Start the install	8
5.2.2	Review License Terms.....	9
5.2.3	Pre-Install Information.....	9
5.2.4	Install Location	10
5.2.5	Select Components.....	11
5.2.6	MachStdMill Folder Name	11
5.2.7	Install the MachStdMill Package	12
5.2.8	Post-install Information.....	13
5.2.9	Completing the Install.....	13
5.2.10	Making a New Profile for use with MachStdMill.....	14
5.2.10.1	Example: Making an MSM Profile from the MachStdMill master profile.....	15
5.2.10.2	Add your Hardware Configuration to the MyMachStdMill Profile.....	16
5.2.11	Initial Loading of MachStdMill	16
5.3	Post Installer Configuration	17
5.3.1	Making a Shortcut to the New Profile.....	17
5.3.2	Installation Complete	18

1 Introduction

Welcome to README file for the MachStdMill screen set. We trust you will find this a significant update from the prior bundled screen set.

This is the Beta test release version of MachStdMill for use with Mach3 v3.

This file contains information you need BEFORE installing the MachStdMill screen set.

Once installation is complete, the full documentation package will be available including Release Notes, User manuals and Reference Manuals.

2 MachStdMill Licensing

The MachStdMill package which includes the MachStdMill software (binaries and sources) and documentation are available only subject to specific license terms. The license terms allow use and/or modification of the software free of charge as long as the license terms conditions are met.

Agreement to the license terms is required before MachStdMill can be installed.

2.1.1 License terms

Copyright © 2010 Calypso Ventures, Inc. All Rights Reserved.

The author of the MachStdMill screen set is Calypso Ventures, Inc.

Redistribution and use in source and binary forms, with or without modification, are permitted provided that the following conditions are met:

1. Redistributions of the Screen Set and supporting Macro source code must retain the above copyright notice, this list of conditions and the following disclaimer.
2. Redistributions in binary form must reproduce the above copyright notice, this list of conditions and the following disclaimer in the documentation and/or other materials provided with the distribution.
3. The name of the author may not be used to endorse or promote products derived from this software without specific prior written permission.

THIS SOFTWARE IS PROVIDED BY CALYPSO VENTURES, INC. "AS IS" AND ANY EXPRESS OR IMPLIED WARRANTIES, INCLUDING, BUT NOT LIMITED TO, THE IMPLIED WARRANTIES OF MERCHANTABILITY AND FITNESS FOR A PARTICULAR PURPOSE ARE DISCLAIMED. IN NO EVENT SHALL THE AUTHOR BE LIABLE FOR ANY DIRECT, INDIRECT, INCIDENTAL, SPECIAL, EXEMPLARY, OR CONSEQUENTIAL DAMAGES (INCLUDING, BUT NOT LIMITED TO, PROCUREMENT OF SUBSTITUTE GOODS OR SERVICES; LOSS OF USE, DATA, OR PROFITS; OR BUSINESS INTERRUPTION) HOWEVER CAUSED AND ON ANY THEORY OF LIABILITY, WHETHER IN CONTRACT, STRICT LIABILITY, OR TORT (INCLUDING NEGLIGENCE OR OTHERWISE) ARISING IN ANY WAY OUT OF THE USE OF THIS SOFTWARE, EVEN IF ADVISED OF THE POSSIBILITY OF SUCH DAMAGE.

3 MachStdMill Beta Reporting and Feedback

The MachStdMill board in the discussion forums at <http://www.machsupport.com/forum/index.php/board,85.0.html> will be the primary vehicle for end user support for MachStdMill.

Please direct any support issues, including installation questions to that forum. Please report any bugs or errata discovered.

4 MachStdMill Resource Usage Information

The MachStdMill screen set uses User space DROs, LEDs, Userlabels etc.

If you are running Mach3 extensions or scripts that use resources that start with “17” or “18” (i.e. 17xx or 17x) they are incompatible with MachStdMill and should be disabled or revised to be compatible with MachStdMill.

See the user manual for more information.

5 Installing MachStdMill

5.1 Update to Mach3 3.43.19 or newer

MachStdMill requires this as a minimum version of Mach3.

It is best to do any needed Mach3 install/update before the MachStdMill install.

While MachStdMill will install on an earlier version of Mach3, it will refuse to run until it finds an minimal revision level of Mach3 during initialization¹.

Attempting the MachStdMill install with an older version of Mach3 can cause complications with the install instructions given below. To avoid that, please install an appropriate revision level of Mach3 prior to installing MachStdMill.

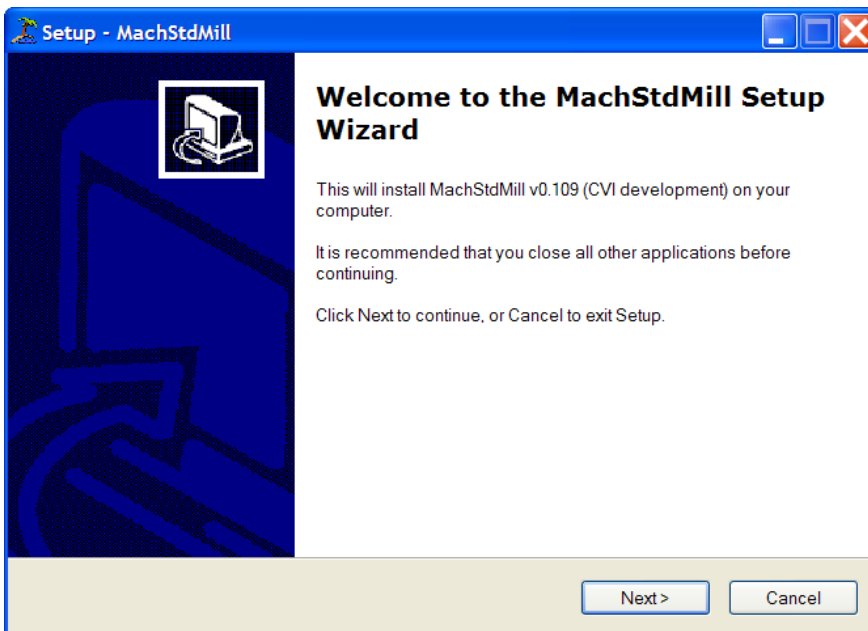
5.2 Installing MachStdMill

Installing MachStdMill is accomplished by running the MachStdMill installer.

This section illustrates the MachStdMill install procedure. The details of these screen shots will change slightly with revisions of the MachStdMill package,

5.2.1 Start the install

Start the install by running the MachStdMill setup program. You will get the initial install screen:

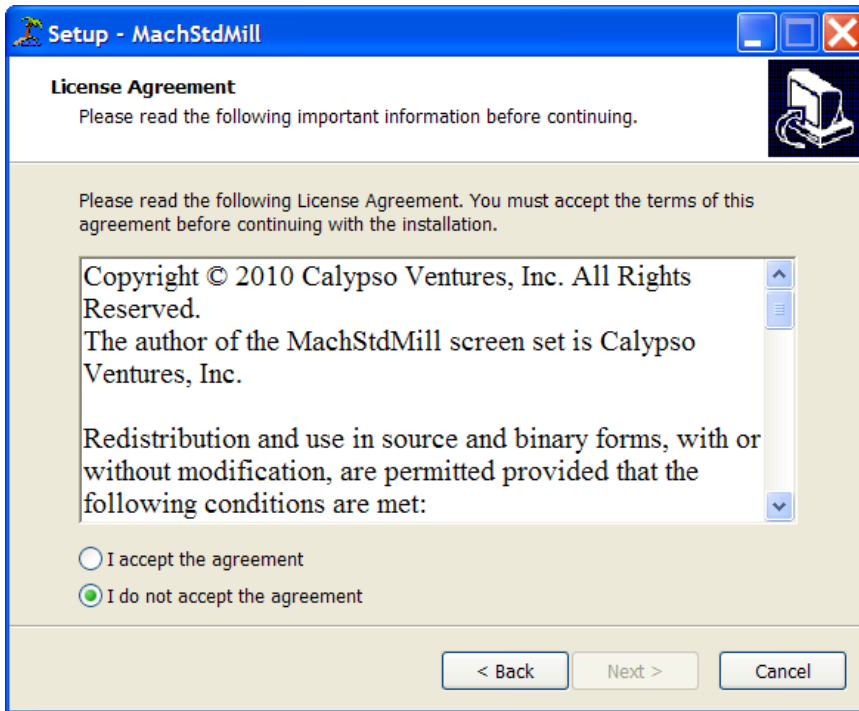


¹ Mach3 versions before 3.42.30 will simply throw an unexplained syntax error when MachStdMill goes to initialize. With Mach3 versions after 3.42.30, MachStdMill can check the Mach3 version information and tell you if the Mach3 version is too old.

5.2.2 Review License Terms

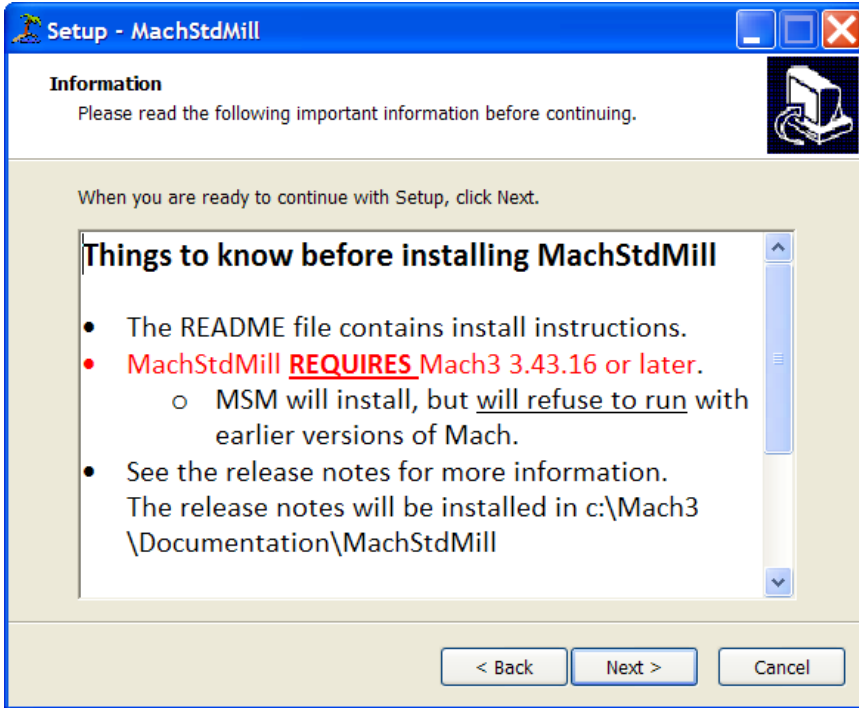
Read and agree to the license agreement in order to install MachStdMill.

If you do not agree with the license terms, do not continue with the installation.



5.2.3 Pre-Install Information

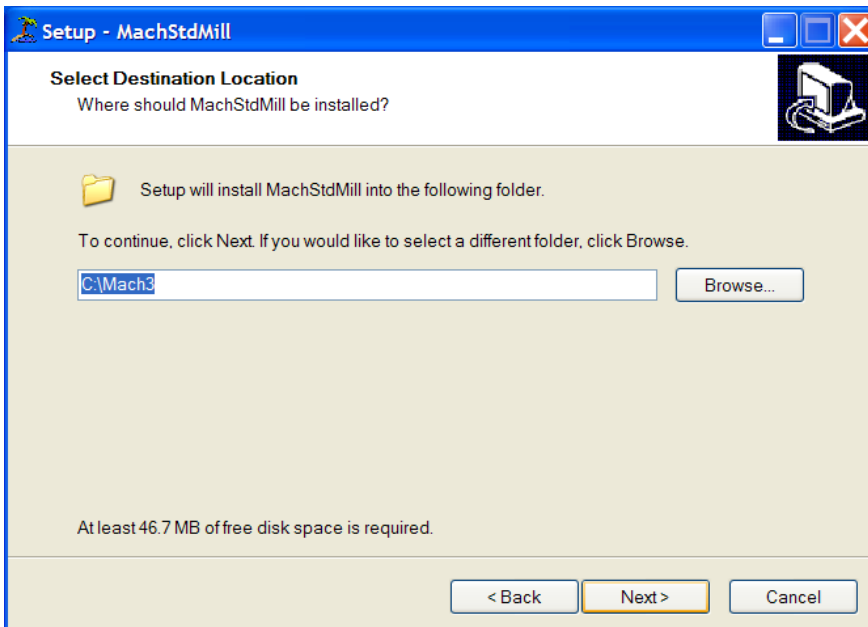
The installer will then display any information that you should know before commencing the installation.



5.2.4 Install Location

Select the default location to install MachStdMill. The installer defaults to the normal install directory for Mach3. Except for unusual circumstances, go ahead and use the default location.

This folder MUST be the same as the Mach3 install folder – change this IF AND ONLY IF Mach3 is installed into a non-standard location.



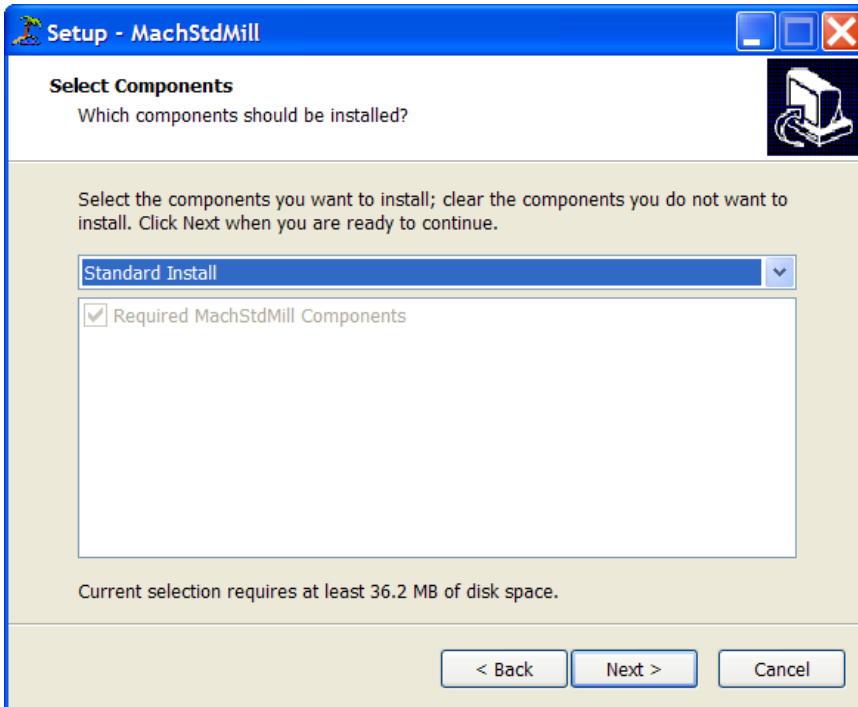
5.2.5 Select Components

This screen allows you to select a standard or custom installation of MachStdMill.

The standard installation will install all that is necessary to run MachStdMill.

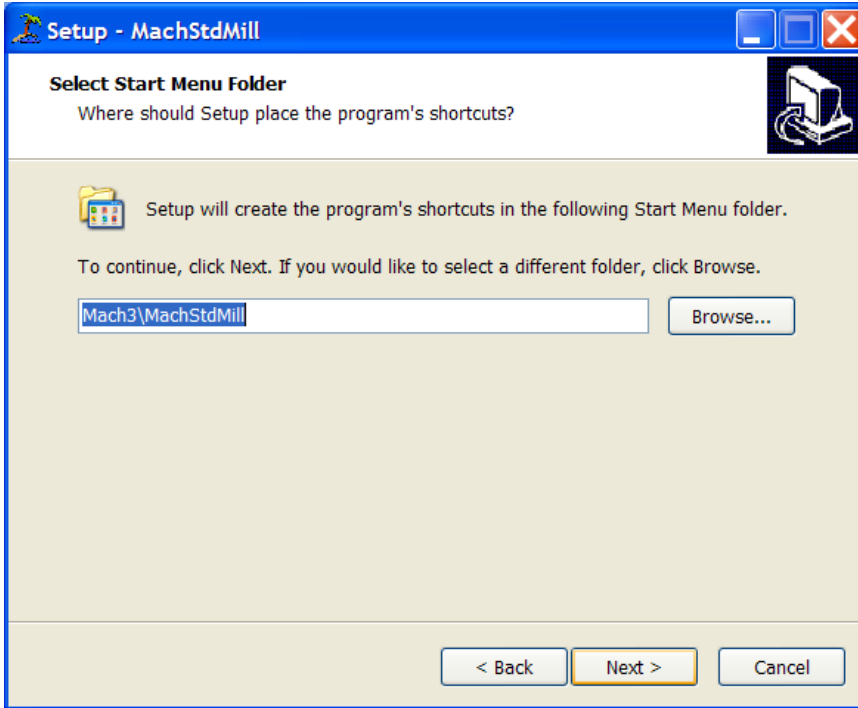
A Custom installation will allow you to also install any available optional components of MachStdMill. (for example, the RealDraw source files for the graphics used by MachStdMill).

The listed available optional components may differ from the screen shot shown below as components are made available.



5.2.6 MachStdMill Folder Name

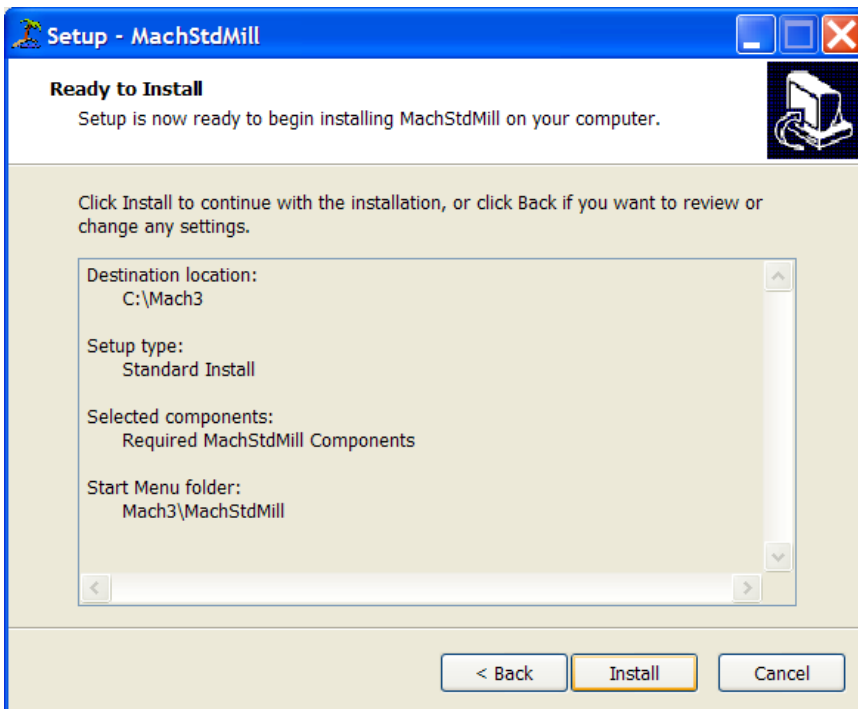
The installer will give you the opportunity to pick the start menu folder name that MachStdMill creates – it is recommended that you use the default name. By default, MachStdMill puts its folder in the Mach3 start menu folder.



5.2.7 Install the MachStdMill Package

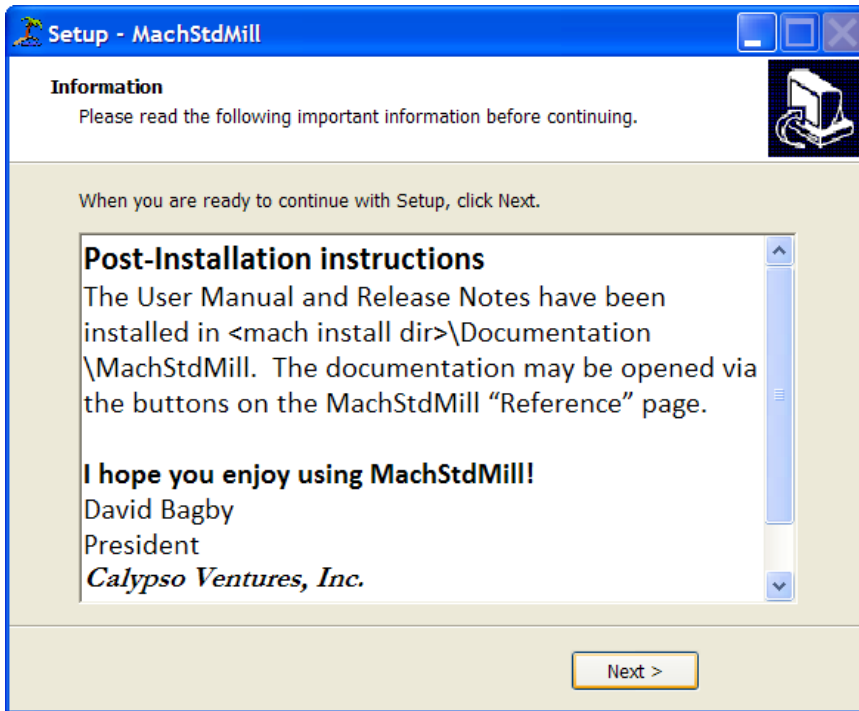
Click the install button to perform the installation.

The exact contents of this screen will vary depending on the optional components selected for the installation.



5.2.8 Post-install Information

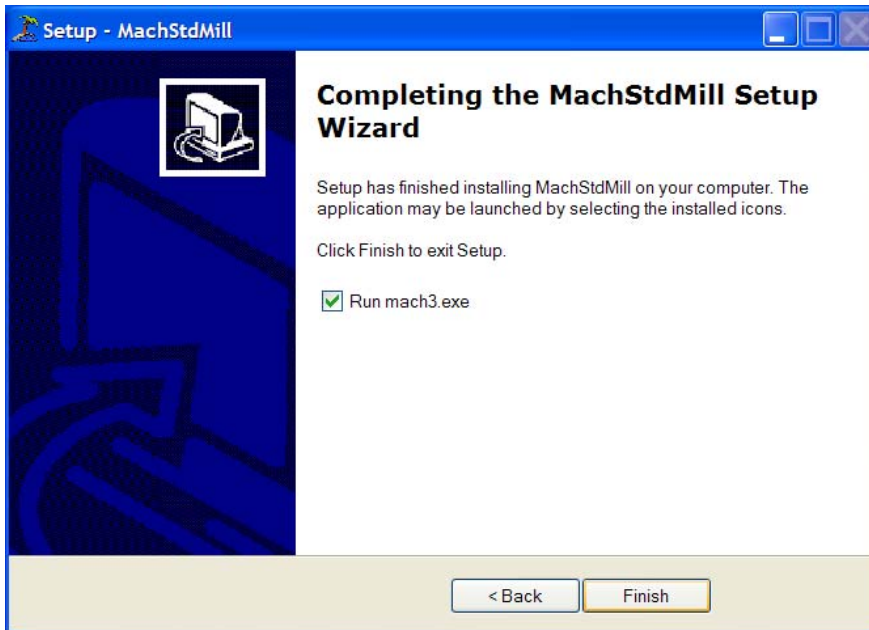
After installing the MachStdMill files, the installer will present this screen with post install instructions.



5.2.9 Completing the Install

The final page of the installation process is shown below.

By default, the install process will run the Mach3 loader so that you can make a new profile by cloning an existing profile.



If you are doing a MachStdMill update install, uncheck the “Run mach3.exe” box and click finish. You have completed the install process and you can use your existing profile to run the updated version of MachStdMill.

If this is first time install of MachStdMill, please keep reading for instructions about making a profile to Run MachStdMill.

5.2.10 Making a New Profile for use with MachStdMill.

The first time you install MachStdMill, you must create a new profile for use with MachStdMill.

This only needs to be done once when you first start using MachStdMill. Once you have a profile configured for MachStdMill, you will not need to do this again.

There are two ways to make a profile for use with MachStdMill:

- 1) Clone an existing profile that is already configured to run your machine. You will then have to hand load the MachStdMill.set set file by hand the first time you load the new profile.
- 2) Clone the MachStdMill master profile and add your hardware configuration settings to the new profile. With this case, you will not have to hand load MachStdMill.set the first time as the master profile already has it set as the current screen set.

You must do one of these two choices.

If you are making the profile from the MachStdMill master profile, you create a copy of the MachStdMill master profile.

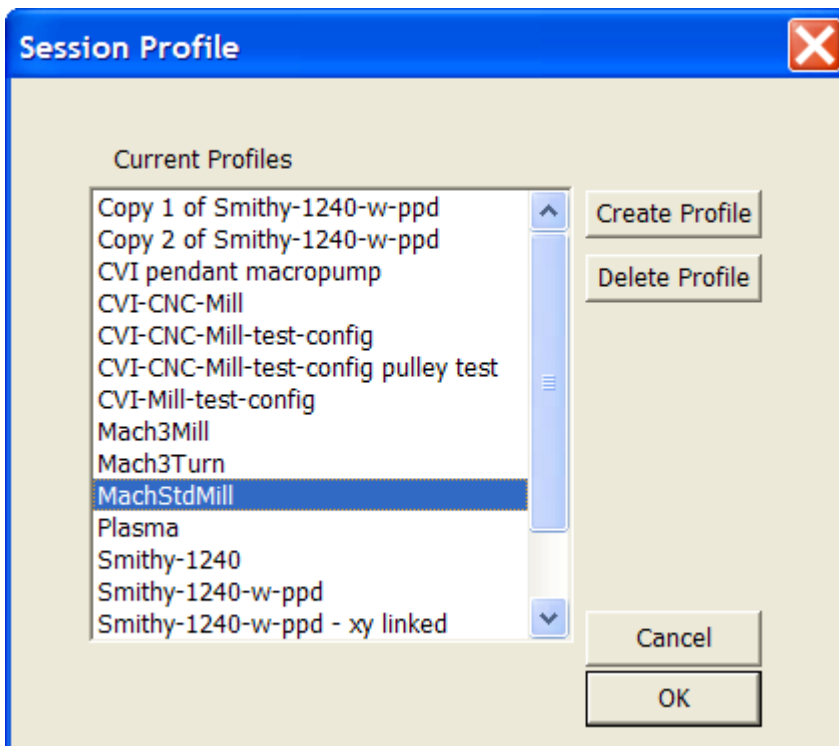
If you are making the profile from an existing, hardware configured profile, you create a copy of your existing profile.

The following steps illustrate making the profile from the MachStdMill master profile. The steps are the same, just the profile name being copied will be different if you are copying your existing profile.

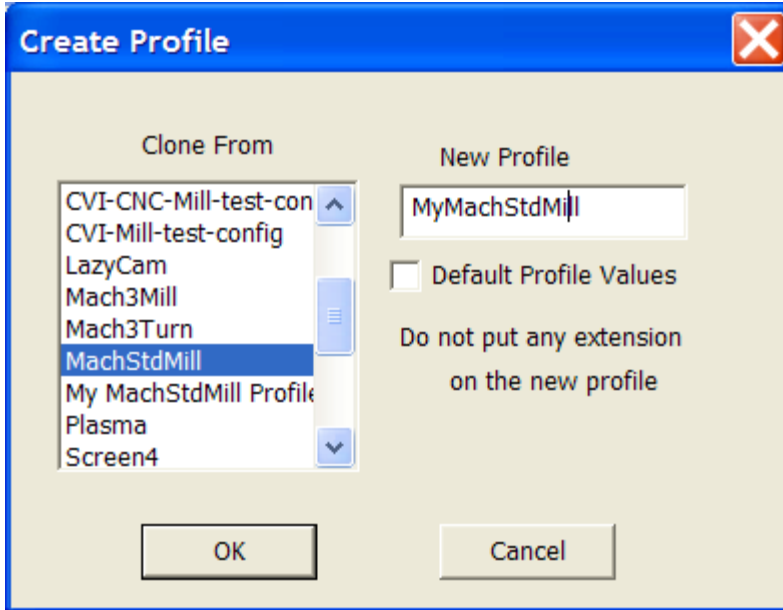
5.2.10.1 Example: Making an MSM Profile from the MachStdMill master profile.

Make your own copy of the MSM master profile using the Mach3 loader as follows:

When the install completes, the Mach3 loader will open. Use “Create Profile” to make your own copy of the MachStdMill profile for customization.



You will be presented with a screen similar to this:



Select “MachStdMill” in the left column.

Create the name for your cloned MSM profile – in this case “MyMachStdMill”.

DO NOT click “default profile values”.

Click “OK” to create the MyMachStdMill profile.

MachStdMill is now installed and ready to run via this profile.

5.2.10.2 Add your Hardware Configuration to the MyMachStdMill Profile.

If you created your profile from an existing profile for your machine, skip this section as your hardware setup is already in the new profile.

Start Mach3 with the MyMachStdMill profile and use the Mach3 configuration menus to configure your hardware interface. To help avoid forgetting about some setting, go through each of the sub-menus under the main Config menu and look at the settings to verify they are the values you desire.

This installation approach has the disadvantage that you may miss a hardware setting for your new profile. An advantage is that over time, Mach XML files tend to collect crud. Using this approach, makes sure that you are starting clean and not carrying over unknown problems that may be present in an old XML file.

When the hardware interface information has been configured, you are ready to run MachStdMill.

5.2.11 Initial Loading of MachStdMill

If you cloned a pre-MSM existing profile, your new profile will be set to load some screen set other than MachStdMill.

You must load MachStdMill manually the first time.

Use the menu View\Load Screens to load up
<Mach3 install dir>\MachStdMill.set

Shut down Mach3 (to get the screen set change recorded in the profile XML file) and then restart Mach3 using your new profile.

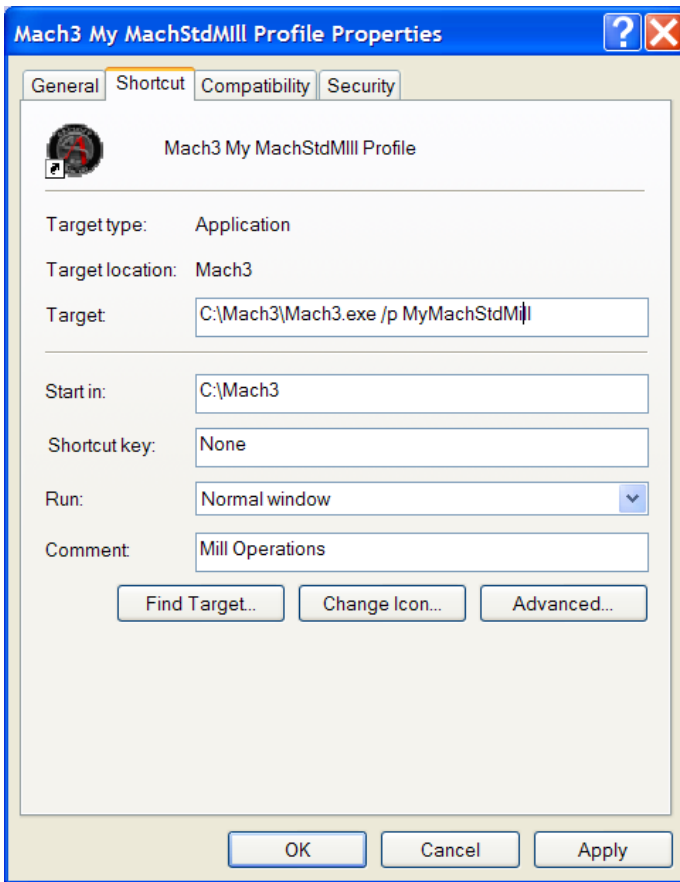
If you copied from the MachStdMill master profile, Mach3 should start up with the MachStdMill screens and the message bar should say “MachStdMill Initialized”.

5.3 Post Installer Configuration

5.3.1 Making a Shortcut to the New Profile.

You may also want to create a shortcut which will run your new profile and hence MachStdMill by default.

This is done by setting the \p command line switch for mach3 in the shortcut properties as shown in the example below:



Double click the shortcut to start Mach3 with your new profile.

You may then use the Mach3 configuration menus to add your machine specific configuration (ex: ports & pins) to the new profile.

5.3.2 Installation Complete

The installation of MachStdMill is complete.

See the release notes and the user manual for information re configuration of optional MachStdMill features.